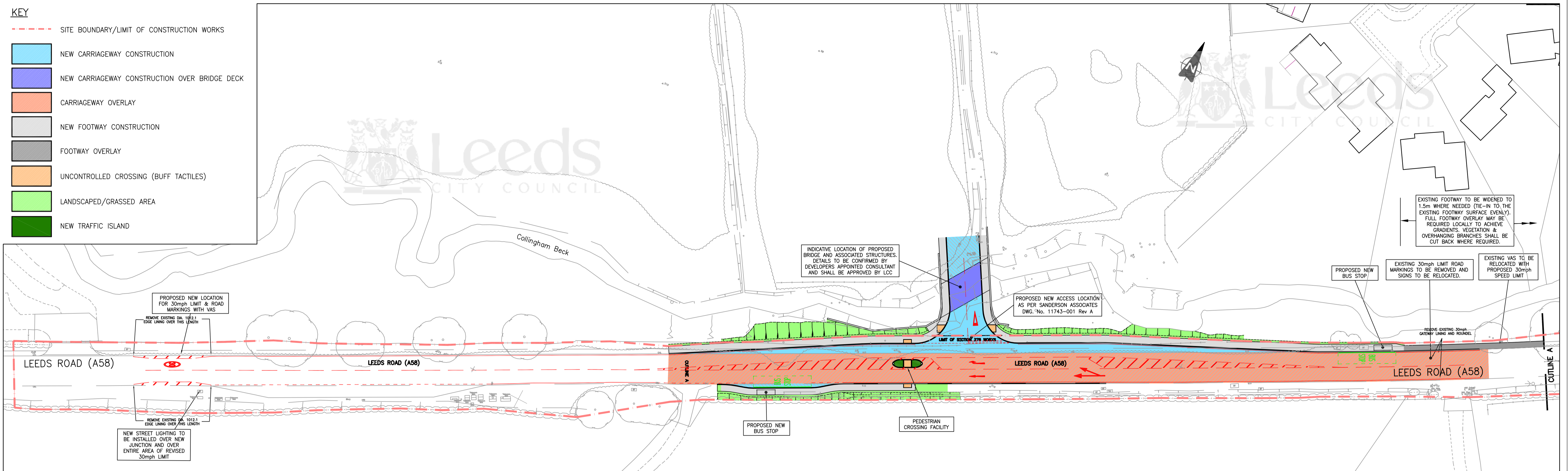


KEY

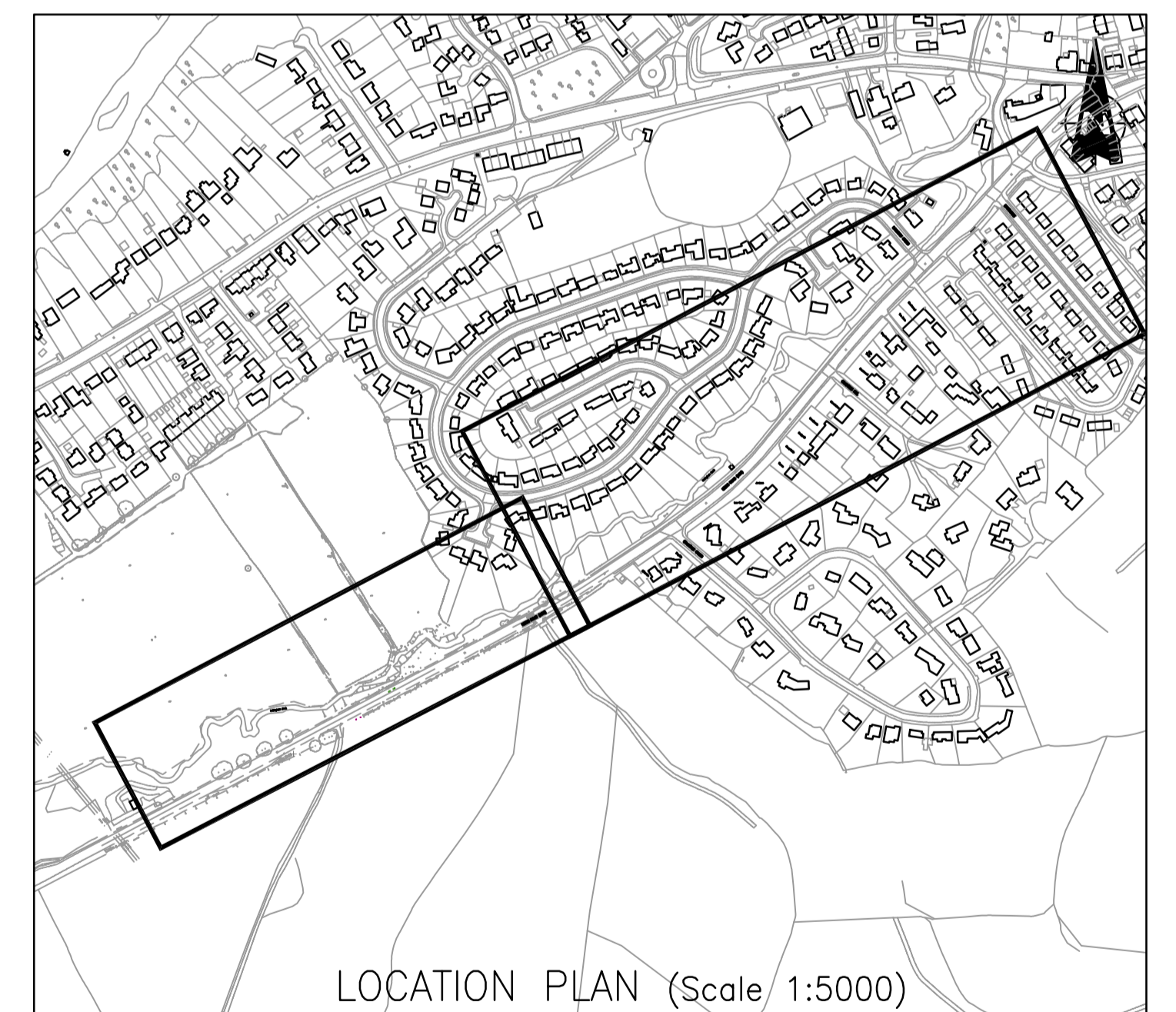
- SITE BOUNDARY/LIMIT OF CONSTRUCTION WORKS
- NEW CARRIAGEWAY CONSTRUCTION
- NEW CARRIAGEWAY CONSTRUCTION OVER BRIDGE DECK
- CARRIAGEWAY OVERLAY
- NEW FOOTWAY CONSTRUCTION
- FOOTWAY OVERLAY
- UNCONTROLLED CROSSING (BUFF TACTILES)
- LANDSCAPED/GRASSED AREA
- NEW TRAFFIC ISLAND



Scale 1:500



Scale 1:1000



© LEEDS CITY COUNCIL
 This drawing is the property of Leeds City Council. It must only be used for the purpose for which it was originally supplied. It must not be copied, published or transmitted by any means to any third party, without the express permission of the originator. Modification or manipulation of all or part of this drawing is strictly forbidden, unless specifically requested or approved by the originator.

S278 HIGHWAY WORKS - A58, COLLINGHAM
PHASE 1 - PROPOSED SITE ACCESS
GENERAL ARRANGEMENT

AMENDMENTS	DRAWN	CHECK	DATE	DRAWN BY	SCALE
FIRST APPROVED				JSR	AS SHOWN
				MW	
				LH	



FIRST APPROVED				732695/LCC/HWT/PH1/DR/CH/01_01a
AMENDMENTS				INFORMATION
STATUS:				APPROVED
DATE:				July 2022